



IBM NetVista Thin Client Manager Operations Utility



5/18/00



TCM Operations Utility

NetVista

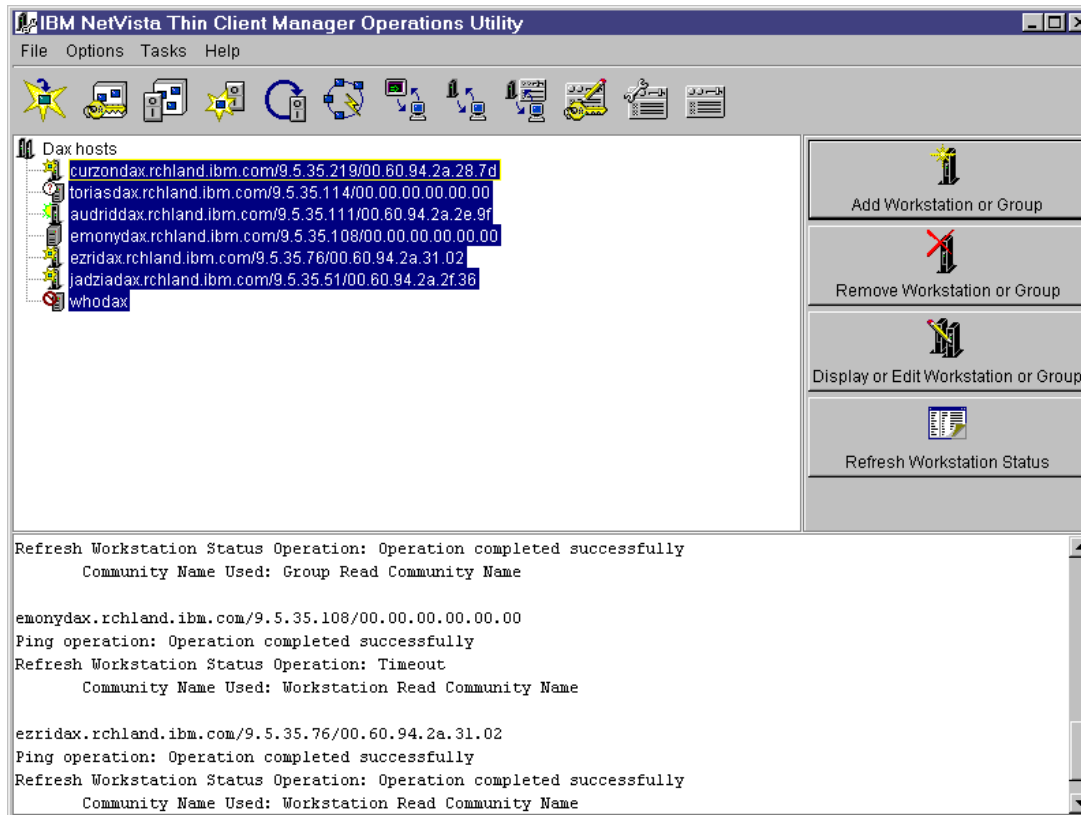
- ▶ **Intended for use by Service, Marketing, and Administrators**
- ▶ **Java application that runs on NT 4.0 or NT 4.0 TSE**
- ▶ **Used to Remotely manage Thin Client Express**
 - ◆ **Assists with Flash Card Updates and Reflash**
 - ◆ **Migration of Thin Client Express to our Flagship NSM product**
 - ◆ **Simple operations such as reboot and wake on LAN**



TCM Operations Utility



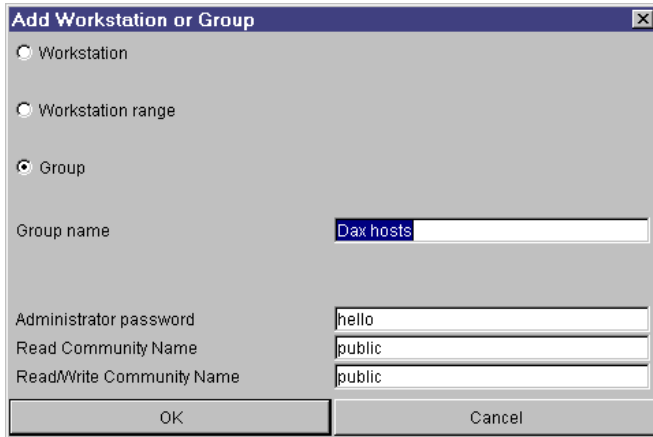
Main Console



- ▶ Create or open workstation list
- ▶ Select workstations in list to manage
- ▶ Refresh status of selected workstations
- ▶ Select task to perform on selected workstations

TCM Operations Utility

Screen Captures



Add Workstation or Group

Workstation

Workstation range

Group

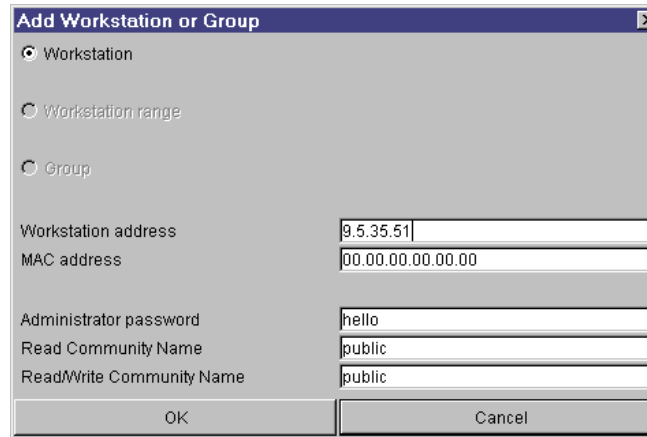
Group name:

Administrator password:

Read Community Name:

Read/Write Community Name:

OK Cancel



Add Workstation or Group

Workstation

Workstation range

Group

Workstation address:

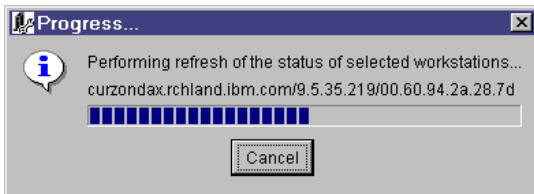
MAC address:

Administrator password:

Read Community Name:

Read/Write Community Name:

OK Cancel

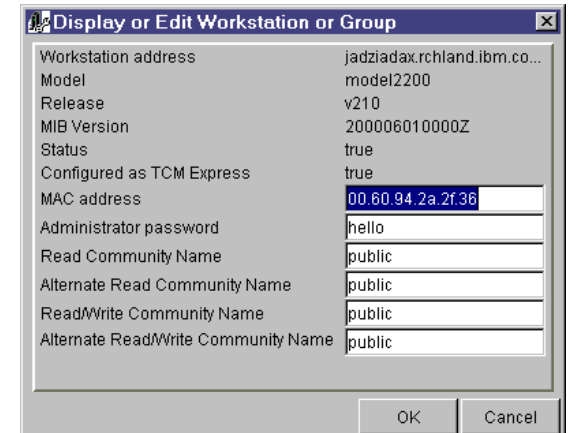


Progress...

Performing refresh of the status of selected workstations...

curzondax.rchland.ibm.com/9.5.35.219/00.60.94.2a.28.7d

Cancel



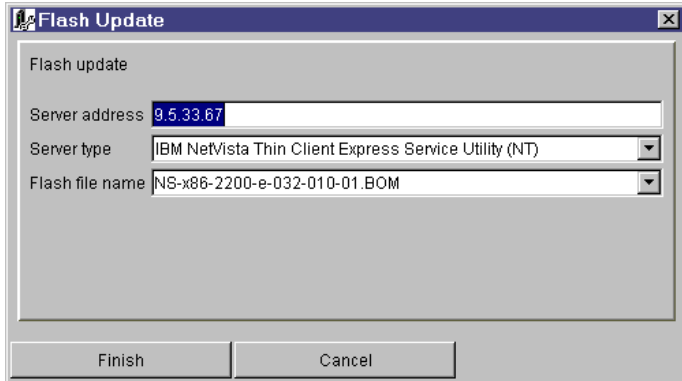
Display or Edit Workstation or Group

Workstation address	jadziadax.rchland.ibm.co...
Model	model2200
Release	v210
MIB Version	200006010000Z
Status	true
Configured as TCM Express	true
MAC address	<input type="text" value="00.60.94.2a.2f.36"/>
Administrator password	<input type="text" value="hello"/>
Read Community Name	<input type="text" value="public"/>
Alternate Read Community Name	<input type="text" value="public"/>
Read/Write Community Name	<input type="text" value="public"/>
Alternate Read/Write Community Name	<input type="text" value="public"/>

OK Cancel

TCM Operations Utility

Screen Captures



Flash Update

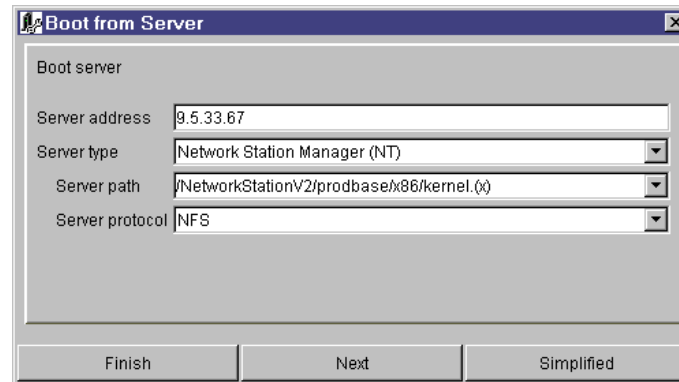
Flash update

Server address

Server type

Flash file name

Finish Cancel



Boot from Server

Boot server

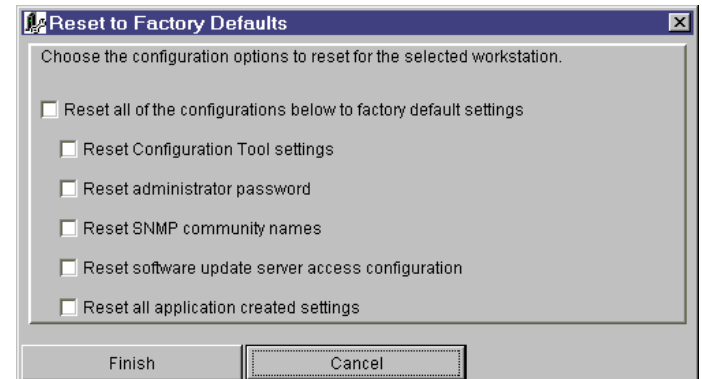
Server address

Server type

Server path

Server protocol

Finish Next Simplified



Reset to Factory Defaults

Choose the configuration options to reset for the selected workstation.

- Reset all of the configurations below to factory default settings
 - Reset Configuration Tool settings
 - Reset administrator password
 - Reset SNMP community names
 - Reset software update server access configuration
 - Reset all application created settings

Finish Cancel



TCM Operations Utility

Managing Thin Client Express



- ▶ **Act as a remote "Power Switch" to the Thin Client Express**
 - ◆ **Shutdown**
 - ◆ **Reboot**
 - ◆ **Wake On LAN**

- ▶ **Remotely sets the NS Boot settings for the Thin Client Express**
 - ◆ **Boot from Flash**
 - ◆ **Boot from Server**
 - ◆ **Authenticate from Server**



TCM Operations Utility

Managing Thin Client Express



- ▶ **Set the Thin Client Express to perform a Flash Update on next boot**
 - ◆ **Note, the Thin Client Express Service Utility provides the flash image for this update**
- ▶ **Perform Backup/Restore of Configuration files**
 - ◆ **Useful for cloning workstations**
- ▶ **And more...**
 - ◆ **Start / Stop Telnet Daemon**
 - ◆ **Start / Stop FTP Daemon**
 - ◆ **Change Remote Access Configuration**
 - ◆ **Grant or Deny Access to Configuration Tool**
 - ◆ **Reset to Factory Defaults**



- ▶ **Reboot the Thin Client Express after the following tasks in order for them to take effect**
 - ◆ **Flash Update**
 - ◆ **Authenticate from Server**
 - ◆ **Boot from Server**
 - ◆ **Boot from Flash**
 - ◆ **Change Remote Access Configuration**
 - ◆ **Grant / Deny Access to Configuration Tool**
 - ◆ **Reset to Factory Defaults (some portions are immediate)**
- ▶ **Considerations for "Boot from Server" task**
 - ◆ **The boot server specified in the Simplified menu will be used as the workstation configuration server and the authentication server.**
 - ◆ **From the Advanced menu you cannot use Flash as the workstation configuration server.**



► **Considerations for "Authenticate from Server" task**

- ◆ **The authentication server specified in the Simplified menu will also be used as the workstation configuration server.**
- ◆ **When using this task you will always boot from flash. If you wish to boot from a server, use the Advanced option of the Boot from Server task.**
- ◆ **From the Advanced menu you cannot use Flash as the workstation configuration server.**



▶ **Change Remote Access Authorization**

- ◆ After values have been set for the administrator password and the SNMP community names through the Change Remote Access Authorization task they can be changed but not removed completely.

▶ **Stop or Start FTP Daemon**

- ◆ After performing a back up of configuration files, use the Stop or Start FTP Daemon to stop the FTP daemon. In this situation a reboot is necessary for the daemon to be stopped.

▶ **Workstation status not accurate on the utility running on an international Windows NT system**

- ◆ The workstation icon and fly-over text indicate that a workstation is turned on after a refresh status is attempted



TCM Operations Utility



Future Enhancements

- ▶ **The TCM Operations Utility will be incorporated into the upcoming release of the Thin Client Manager (TCM)**
- ▶ **WBT management will be supported**
- ▶ **Additional changes to support Thin Client Express enhancements**