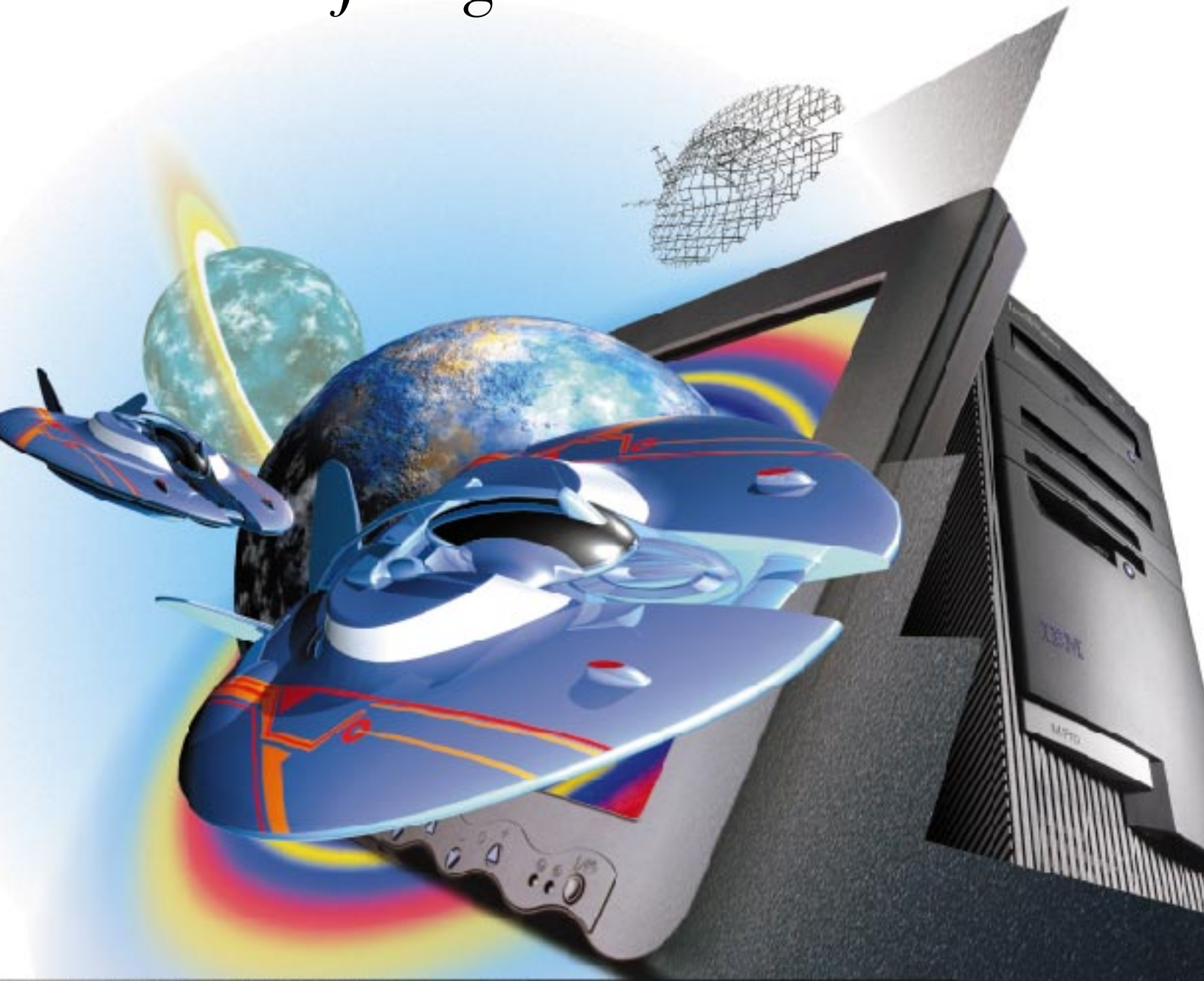


The IBM IntelliStation



Solutions for digital media artists



IBM IntelliStation



**No compromises.
No excuses.
Plenty of attitude.**

Introducing the IBM IntelliStation. From the stealth-gray fuselage to the pixel-perfect display, you sense the raw energy of this machine. A can-do attitude that steps up to your daily challenge: to produce more, in less time, with higher quality. A new class of workstation designed to invigorate your art, powered-up to keep inspiration flowing. Working at the speed of thought. Projecting your vision across the network, across platforms, and around the world. It's time for a change. Time to fast-forward with the IBM IntelliStation.

A new way of working

The IBM IntelliStation series combines Intel's® most advanced processors with Microsoft Windows NT 4.0, the industry-standard 32-bit OS featuring multithreading, multitasking and multiprocessing. Result? Workstation power *and* the ultimate in desktop productivity – from image processing to prepress and Web design, 3D modeling/rendering to non-linear video editing and reality-altering effects – as well as your favorite word processor, project manager, and e-mail. Ready to plug-and-go with your current network and interoperable with UNIX environments for the ultimate in cross-platform connectivity.

Killer apps have met their match

The criteria for your next workstation can be nothing less than potent performance, faultless reliability, and worry-free application compatibility – the very standards the IBM IntelliStation meets through certification by leading software vendors. Their rigorous testing confirms the IBM IntelliStation's application-focused performance and compatibility, as well as giving you the assurance of expert, coordinated support encompassing both hardware and software issues. Visit your IBM Business Partner to view the fully-rendered performance of the IBM IntelliStation. Or get a preview and the full list of certified applications at our Web site www.us.ibm.com/intellistation

You are only as fast as your tools

The creative process needs time for experimentation; your client wants results tomorrow! With the IBM IntelliStation's responsive performance, you'll have more time to create the perfect look, the right timing, the happy ending – and still meet the deadline. IBM IntelliStations burn through complex projects fueled by industrial-duty Intel Pentium II processors with MMX™ technology, optimized for the demanding dynamic media you juggle every day. In single or dual processor

*The IBM IntelliStation
– working at the speed
of thought*

configurations up to 300MHz,¹ these IBM dynamos offer multitasking performance rivaling – even surpassing – RISC workstations.

With today's huge graphic files and marathon rendering sessions, you can never be too rich or have too much RAM. That's why your IntelliStation can be fortified with robust memory configurations up to a massive 1GB. Ultra-fast 7200rpm hard drives are available up to 9.1GB,² with standard Wide Ultra SCSI I/O blasting throughput at up to 40MBps per channel for smooth animation and video playback. Models equipped with dual SCSI channels include RAIDport (supports RAID levels 0 and 1). And all IntelliStation models feature 10/100 Ethernet for speedy collaboration across your workgroup. With balanced integration of these advanced standards-based technologies, the IBM IntelliStation zooms in on superior application performance.

IntelliStation at a Glance

	M Pro	Dual M Pro	Z Pro
Processor	266MHz, 300MHz Pentium II processor	Single or dual 233MHz, 266MHz 300MHz Pentium II processors	Single or dual 200MHz Pentium Pro processors
L2 cache	512KB on-board	512KB on-board	256KB or 512KB on-chip at 200MHz
Memory maximum	512MB	512MB	1GB
Type/speed/total sockets	EDO ECC/60ns/3DIMMs	SDRAM ECC/60ns/4DIMMs	EDO ECC/60ns/4 DIMMs
Wide Ultra SCSI hard drives	4.3GB/5400rpm	Up to 9.1GB/7200rpm (optional)	2.1 and 4.5GB/7200rpm
Slots/Bays	5 slots/5 bays	6 slots/6 bays	7 slots/6 bays
Graphics engines	Matrox Millennium Intergraph Intense3D Pro 1000/T	PERMEDIA 2 Intergraph Intense3D Pro 2200/T	Matrox Millennium Intergraph Intense3D Pro 1000/T

Explicitly graphic

To keep your creative momentum flowing, IntelliStation offers leading graphics engines from 3Dlabs, Matrox and Intergraph for super-crisp screen response and essential OpenGL support. For demanding 2D work and a wide range of 3D projects, the PERMEDIA 2 graphics adapter is the card to watch. This 24-bit screamer – based on 3Dlabs GLINT technology – taps into the dedicated Accelerated Graphics Port, with pipelined access to system memory delivering a brilliant 129 score on the Winbench test.³ The Matrox Millennium is a popular choice with 24-bit resolution up to 1600x1200 and a flicker-free refresh rate of 200Hz. For your most demanding 3D applications, the Intense3D Pro 2200/T adapter from Intergraph delivers hardware-accelerated trilinear MIP-mapping and fill rates up to 22 million 32-bit texels/second.⁴ Virtually double that prodigious performance by adding the Intergraph Geometry Accelerator option with seven dedicated DSPs accelerating your vision with 840 megaflops of processing power. You may never want to leave your exquisitely textured 3D world – except for pizza! The IBM IntelliStation's realtime graphics eliminate the wait and let you create.

Pipeline from IBM: all-digital, all the time

Introduced at SIGGRAPH, IBM's total media solution – *The Pipeline* – comprises a complete digital media collaboration environment, from design to delivery. This strategic tool archives and serves audio, video, film, graphics, multimedia and prepress files – in their native formats – for immediate, universal access. Developed expressly for digital media creators, *The Pipeline* integrates the IntelliStation series with IBM's Digital Library, Serial Storage Architecture (SSA) disk farms and the ImageNET II SSA-based networking system from Pathlight Technology. Multiple users can concurrently access files stored on the central disk array, sending and receiving multiple streams of data – even uncompressed D1 video – at

80MBps. Current users will be able to migrate to SSA data rates of 160MBps within the year. IBM's Media Content Manager completes the picture with asset management, patented search algorithms, workflow tracking and rights protection. Riding *The Pipeline*, you'll spur creativity, pump up production and combat piracy as your digital assets set sail across cyberspace.

*The advanced workstation
for creative explorers...*





Master your domain with advanced manageability

IBM is committed to help you manage and protect your workstation investment. For example, IBM IntelliStations are equipped with intelligent hard drive diagnostics and DMI-compliant instrumentation. Monitor the health of your systems with IBM's predictive failure analysis tools, eliminating disruptive downtime. IBM's Wake on LAN (WOL) provides key technology for remote system management, from booting idle computers for software updates to standardizing the BIOS/CMOS setup of every WOL-enabled computer on the network. IBM's Netfinity Manager and Intel's LANDesk® software clients⁵ are included for unprecedented control over your domain. Work assured knowing IBM's Customer Service and Support Team is on alert 24 hours a day, 7 days a week,⁶ equipped with power tools like CoSession for remote problem resolution. With IBM, Advanced Manageability is included with every system.

Custom striping available

Your IBM IntelliStation can be customized to suit your special needs. Ready for RAID? Ravenous for RAM? IBM Business Partners – specialists in detailing your machine for life in the fast lane – are standing by to take your call. And with IBM's 24x7x365 Worldwide Service and Support, you can concentrate on doing what you do best: entertaining, informing and amazing.

Plenty of attitude

No compromises. No excuses. With the IBM IntelliStation, nothing gets in the way of a good idea!

*The IBM IntelliStation
–nothing gets in the way
of a good idea!*

© International Business Machines Corporation 1997

IBM Personal Computer Company
Department MFZA
3039 Cornwallis Road
Research Triangle Park, NC 27709

Printed in the United States of America
10-97
All Rights Reserved

¹ MHz only measures microprocessor clock speed, not application performance. Many factors affect application performance.

² GB equals one billion bytes when referring to hard drive capacity. Accessible capacity may vary.

³ IBM results using WinBench 97 v1.0 Business Graphics WinMark 97; 1024x256 colors, Windows NT 4.0 SP2. Benchmarks submitted to the OpenGL Performance Characterization Organization: www.specbench.org/GPC/OPC.static/

⁴ Source: Intergraph Corporation

⁵ Provided on CD-ROM at no additional charge.

⁶ Excluding some holidays. Response time may vary.

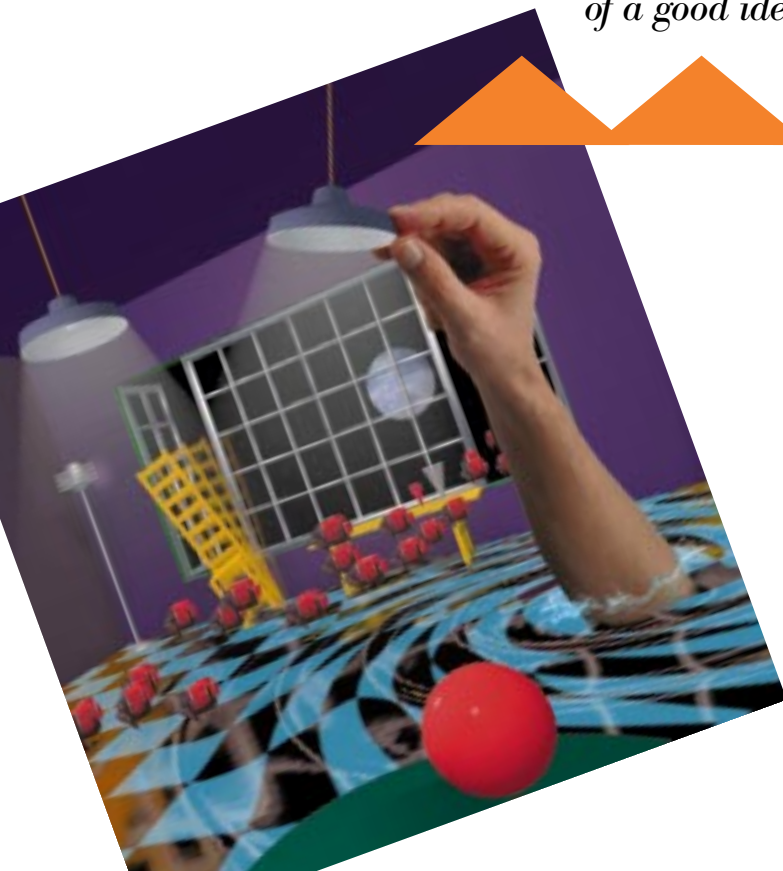
IBM, IntelliStation, IBM SystemXtra, Media Content Manager, Digital Library, NetFinity, LANClient Control Manager and Wake on LAN are trademarks or registered trademarks of International Business Machines Corporation. Microsoft and the Windows NT logo are trademarks of Microsoft Corporation. Intel, Pentium, MMX and LANDesk are trademarks or registered trademarks of Intel Corporation. UNIX is a registered trademark in the U.S. and other countries licensed exclusively through X/Open Company Limited. Other company, product and service names may be trademarks or service marks of others.

This publication was published in the United States. IBM may not offer products, services or features discussed in this document in other countries and the information is subject to change without notice. Consult your local IBM representative for information on the products, services and features available in your area.

International Business Machines Corporation provides this publication "as is" without warranty of any kind, either expressed or implied, including but not limited to, the implied warranties of merchantability or fitness for a particular purpose. Some jurisdictions do not allow disclaimer of express or implied warranties in certain transactions, therefore, this statement may not apply to you.



Printed on recycled paper containing 10% recovered post-consumer fiber.



Tested, warranted and supported by manufacturer to IBM IntelliStation Compatibility Standards.

