



SERIAL TO USB ADAPTER - INSTALLATION GUIDE

31R3124

This IBM Serial to USB Adapter provides a simple way to connect serial and Universal Serial Bus (USB) port interfaces.

Use the Serial to USB Adapter if the server that is protected by the uninterruptible power supply does not have a serial port. The uninterruptible power supply serial port interface connects to the server through the server USB port interface. The connection enables Power-Chute® Business Edition (PCBE) management and configuration software to communicate to the uninterruptible power supply. This product is USB 1.1 compliant.

The package contents include: Serial to USB Adapter (USB type A to DB9), Serial to USB Adapter Drivers CD, and the PCBE CD.

Microsoft Windows Operating Systems Users:

INSTALLING THE DEVICE DRIVER

1. Turn on the server and make sure that the USB port is working properly.
2. Connect the Serial to USB Adapter to the server USB port. **Note:** The “Found New Hardware Wizard” will run to assist you in setting up the new device.
3. Insert the Serial to USB Adapter Drivers CD into the CD-ROM drive.
4. Click **Next** to continue.
5. *Microsoft® Windows® 2000:* Select **Search for a suitable device driver for my device.**

Windows XP/2003: Select **Install the software automatically.**

Windows 2000:



Windows XP/ 2003:

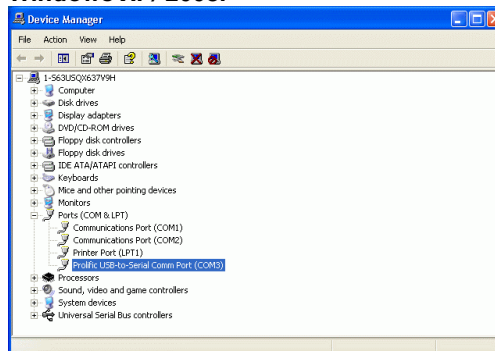


6. Click **Next** to continue.
7. *Windows 2000:* Select **CD-ROM drives.**
Windows XP/2003: The device driver is automatically detected and installed.
8. Click **Next** to continue.
9. *Windows 2000:* The device driver (ser2pl.sys) is automatically detected. Click **Next** to continue.
10. Click **Finish.**
11. To make sure that the device driver is installed correctly, click **Control Panel=> System=> Hardware=> Device Manager.**
12. Check that the Prolific USB to Serial Comm Port is under the Ports (Com & LPT) heading.
13. Record the port number assigned to the adapter.

Windows 2000:



Windows XP/ 2003:



CONNECTING TO THE UNINTERRUPTIBLE POWER SUPPLY

1. Turn off the uninterruptible power supply.
2. Connect the serial connector on the Serial to USB Adapter to the serial port on the uninterruptible power supply.
3. Turn on the uninterruptible power supply.
4. Connect the USB connector of the Serial to USB Adapter to an open USB port, if not already connected.
5. Install the PCBE software. **Note:** During the installation process, the uninterruptible power supply should be discovered automatically. If not, it might be necessary to manually add the uninterruptible power supply using the port information recorded during the *Installing the Device Driver* steps.

UNINSTALLING THE DEVICE DRIVER

1. Disconnect the Serial to USB Adapter from the server.
2. Run the **D:\Driver\WINDOWS\Uninstall.exe** from the Serial to USB Adapter Drivers CD.
3. Click **OK** to continue.
4. After the device driver is removed, restart the server.

Linux Operating Systems Users:

INSTALLING THE DEVICE DRIVER, CONNECTING TO THE UNINTERRUPTIBLE POWER SUPPLY, AND UNINSTALLING THE DEVICE DRIVER

The Serial to USB Adapter uses the pl-2303 chipset. The following instructions were tested on a server running the Red Hat® Linux® 8.0 operating system.

1. Start a Linux operating system.
2. Open a terminal window.
3. At the command prompt, type the following commands:
 - To install the device driver, type `make i n s t`. (The Makefile command will check the module and compile and link it automatically. It will also remove the loaded Serial to USB device driver.)
 - To uninstall the device driver, type `make uni n s t`.
 - To uninstall all device drivers (including the base device driver), type `make uni n s t _ a l l`.
 - To remove module (*.o) files, type `make cl e a n`.
4. Connect the serial connector on the Serial to USB Adapter to the serial port on the uninterruptible power supply.
5. Connect the USB connector on the Serial to USB Adapter to a USB port on the server.
6. You can now access the adapter by typing the `/dev/usb/ttyUSBn` command, where *n* is the USB port into which the adapter is connected.

First Edition (December 2004)

© Copyright International Business Machines Corporation, 2004. All rights reserved.

U.S. Government Users – Restricted rights – Use, duplication or disclosure is subject to restrictions set forth in GSA ADP Schedule Contract with IBM Corp.

Trademarks

IBM is trademark of International Business Machines Corporation in the United States, other countries, or both. APC and PowerChute are registered trademarks of American Power Conversion Corporation. Microsoft, and Windows are trademarks of Microsoft Corporation in the United State, other countries, or both. Linux is a trademark of Linus Torvalds in the United States, other countries, or both. Red Hat is a registered trademark of Red Hat, Inc., in the United States, other countries, or both. Other company, product, or service names may be trademarks or service marks of others.