



Application Workload Manager

- > *Simplified System Resource Management*
- > *Improved Application Availability and Performance*
- > *Increased Server Utilization and Productivity*
- > *Essential Foundation for Server Consolidation*



An essential new software utility for advanced workload management, Application Workload Manager (AWM) from Aurema provides a comprehensive, proven solution for the allocation, management and control of operating system resources – including CPU and real and virtual memory – on IBM eServer xSeries servers and appliances.

AWM integrates tightly with IBM Director to extend the system management capabilities of the Microsoft Windows operating system, providing previously unavailable levels of application workload management, dependability, and control. Maximizing system utilization without compromising application performance, AWM brings increased productivity, efficiency and reliability – and with it lower Total Cost of Ownership – to Windows-based server environments.

Designed to manage system resource contention in demanding enterprise environments and provide a solid foundation for Server Consolidation, AWM dramatically improves application availability on eServer xSeries servers to keep workloads running at maximum efficiency across the enterprise, even during times of peak system loads.

Aurema Application Workload Manager delivers increased levels of reliability, productivity and system utilization, improving quality of service while driving down total cost of server ownership.

Dynamic Resource Management Puts You In Control

While other system management tools offer the means to monitor system resources and workload usage, only Aurema's Application Workload Manager extends the capabilities of IBM Director to give you the power to control how applications use valuable server resources.

With AWM, you determine how to put your critical system resources – including CPU processor and memory utilization – to the best possible use.

more users and applications to your IBM eServer xSeries servers, without compromising service levels – and without any complex configuration.

For more sophisticated resource allocation needs, Application Workload Manager offers finely-grained resource management policy and control. With AWM, you determine the relative importance of each and every program on your system, creating custom, dynamic resource

The result is optimized use of system resources, superior availability and responsiveness, increased service levels, and maximum performance from your eServer xSeries servers.



It's about control

Simple to deploy, with intelligent, self-configuring auto-start integrated directly into Director, Application Workload Manager ensures efficient, reliable distribution of system resources, right out of the box.

AWM's default configuration manages every process on the system and ensures all users equal distribution of server resources, so you can rapidly add

allocation policies directly through the standard IBM Director interface.

AWM manages the distribution of system resources according to the entitlements you've set, ensuring that your most important users, services and applications get the resources they require.

In consolidated server scenarios, Application Workload Manager dramatically increases server utilization, making it possible to effectively run multiple mission-critical applications on a single machine.

Designed to manage system resource contention in demanding enterprise environments, Application Workload Manager maximizes server utilization while ensuring uncompromised application performance.



Solid Foundation For Server Consolidation

In the face of recent server population explosion, it has become imperative, economically and efficiently, to consolidate distributed applications and workloads onto fewer servers and lower Total Cost of Ownership – without sacrificing Quality of Service or the performance of mission and business-critical processes across the enterprise.

In consolidated server scenarios, Application Workload Manager dramatically increases the utilization of your machine's CPU, allowing you to effectively run multiple mission-critical

applications on a single IBM eServer xSeries server, and provide a solid foundation for server consolidation.

By dynamically managing CPU and memory allocation to control application resource contention, Application Workload Manager enables a single IBM eServer xSeries machine to simultaneously run such previously system-draining processes as SQL databases, IBM WebSphere, or IIS web server software – all at predictable service levels with no degradation in quality or downtime.

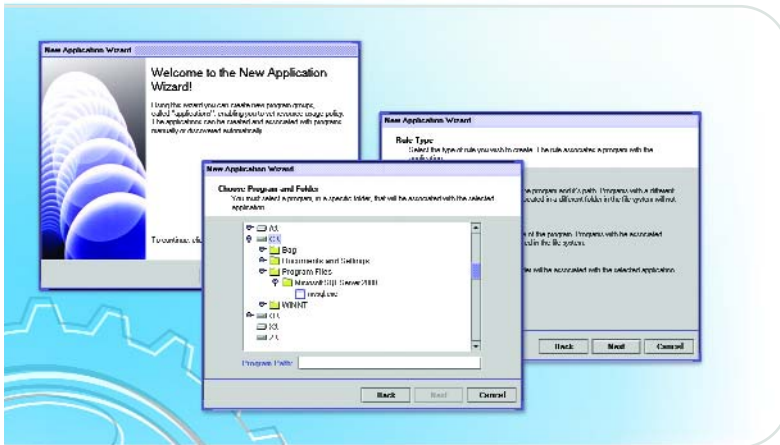
With each of these mission-critical applications guaranteed adequate system resources through Application Workload Manager, the machine can support them and run continuously and effectively at 100% CPU load, increasing efficiency and dramatically decreasing the total number of machines across your enterprise. Fewer machines mean lower operations costs, less hardware, simpler IT administration and reduced software license fees. And dramatically lower Total Cost of Ownership.

Simplified Deployment, Discovery and Reporting

Providing for simple, streamlined installation, Application Workload Manager works with IBM Director to extend the manageability of IBM xSeries systems.

Deployment and configuration are fast and easy too, thanks to Application Workload Manager's graphical user interface, simplified point-and-click policy assignment, and multiple

you to easily view all applications and services running on a server or server group, as well as the resource usage, entitlement, status and consumption of each, and to manage them appropriately.



With intelligent, self-configuring auto-start integrated into Director's drag-and-drop Remote Deployment Manager and Software Distribution Assistant, Application Workload Manager ensures protection from runaway processes and predictable distribution of system resources, right from the start.

monitoring and graphing tools, which provide a new level of visibility, application discovery and control to Director at the application level, to help track workloads and system performance.

This enhanced discovery and display through Director enables

And, because Application Workload Manager is integrated so tightly with Director, you can easily add custom applications, or use the tool to dynamically and intelligently adapt to system usage of various day parts and related system loads, or to send automated alerts to Director to trigger automatic restarting of runaway or errant applications to minimize downtime.

In addition, the comprehensive application resource usage data and related information collected across all systems and groups by Application Workload Manager is seamlessly available through both Director and Microsoft's Windows Management Interface (WMI) for improved usage, billing and performance analysis.

Improved System Reliability, Protection Against Runaway Processes

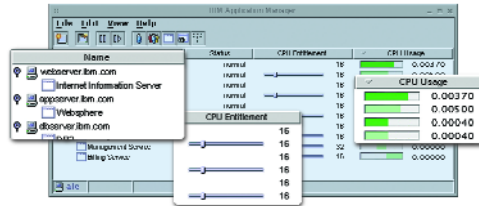
Runaway processes can hijack a machine's CPU, bogging down databases, slowing transaction rates, and bringing your servers to a grinding halt – unless you're protected by Application Workload Manager.

AWM aggressively combats application workload contention and protects against CPU-intensive and "runaway" processes by giving you predictable control over how each process consumes valuable system resources.

By continually monitoring, optimizing and dynamically reallocating CPU resources based on the parameters you've set, Application Workload Manager actively prevents any program – even a runaway one – from adversely affecting the performance of another.

Since unplanned system outages on the IBM eServer xSeries are

rare with Application Workload Manager, overall system reliability improves as well. The result is optimized use of system



resources, maximum server performance and improved levels of service. And an end to the nightmare of runaway processes.

Aurema Application Workload Manager improves application availability on IBM eServer xSeries servers to keep your workloads running at maximum efficiency across the enterprise – even during times of peak system load.



About Aurema

The global leader in Active Resource Management, Aurema keeps the world's computer servers at the forefront of performance. Dedicated since 1986 to delivering improved system efficiency, productivity and performance through advanced resource management, Aurema's software and technologies are successfully deployed in thousands of installations worldwide.

The company's flagship product, *ARMTech™ Active Resource Management Technology*, provides a comprehensive, proven solution for the allocation, management and control of major system resources on computer servers and appliances. Optimized for Microsoft Windows® 2000 and UNIX® operating systems, Aurema's family of ARMTech system resource management products maximizes server utilization without compromising application performance, to bring new levels of productivity, efficiency and reliability to the enterprise environment.

Aurema Inc

www.aurema.com

19925 Stevens Creek Blvd.
Cupertino CA 95014-2358

Phone: (408) 973-7894

Fax: (408) 973-7274

info@aurema.com



Unparalleled Application Availability and Performance

With cutting-edge technology, the blazing-fast processing power of IBM's eServer xSeries servers, high availability and now the application control and resource protection of Application Workload Manager from Aurema, it all adds up to *improved server performance, unparalleled application availability and lower total cost of ownership.*

With your IBM eServer xSeries servers protected by Application Workload Manager, you can rest assured that *the resources you need are there when you need them.*